



## **Simi Settlers' Amateur Radio Club**

# **Short Circuit**

<b>1</b>	Timely Information
<b>2</b>	Nets of Interest ACS/ARES Corner
<b>3</b>	Member Updates
<b>4</b>	The Marketplace
<b>5</b>	Simi Settlers' Leadership
<b>6</b>	Membership Form

The next **meeting** is at the

**Simi Senior Center,**

3900 Avenida Simi, Simi Valley.

**Thursday September 11, 2025** at 7:00 PM.

The next **Pizza** Night is at

**Toppers Pizza,** 2408 Erringer Rd, Simi Valley

**Thursday September 4 at 6:00 PM**

### **Things to discuss at our September meeting:**

We did not quite complete the discussion and arrive at any conclusion.

Keep the 220 repeater?

Move the Sunday night net - **YES** to **447.640 UHF** repeater - **PL is 131.8 Hz**

September 2025

## The Second Annual Ham Radio $\mu$ Expo to be held on September 13, 2025 at CSUCI.

For the last several years, the BORED Net Group has been holding our monthly  $\mu$ Field Day (say “Micro Field Day”) in Ventura County, where hams from all over can get together for informal portable ops and club-agnostic camaraderie. And now we’re stepping it up a notch...on September 13, 2025, we’ll be holding our second annual Ham Radio  $\mu$ Expo! This is in collaboration with the Cal State Channel Islands Amateur Radio Interest Group, and will be held on the CSUCI campus. Our first effort last year was a complete blast. Admission is FREE, anyone who wants to set up a table or booth can do so FREE, the speakers are FREE, it’s amazing.

Highlighting the  $\mu$ Expo will be the ARRL Santa Barbara Section annual meeting, where members can discuss important matters, share updates, and collaborate on future initiatives. This comprehensive gathering will serve as a platform for hobbyists to connect, learn, and contribute to the amateur radio community.

Parking is \$6 per vehicle all day. The campus will have all of its food services open all day as well.

We have a special call sign for the event, [K6E](#). Anyone operating during the event can use this call. Submit your log to Keith W6KME after the event and he will take care of LOTW and QRZ submissions.

The following maps show the same site in several different scales, starting with a large area overview. Use GPS coordinates 34.16185, -119.04516 to navigate to the loading/unloading area.

The Settlers will have a booth where you are requested to **bring and show your Go Box**.

Come and visit, bring a chair to come and sit for a few hours.

Go to the ARRL meeting and see what is happening with the national organization!

We will have two shade pop-ups, and a few tables.

Visit <http://www.theborednet.net/index.php/ham-radio-expo-to-be-held-on-september-12-2025/>

September 2025

# Ham Radio $\mu$ Expo

## Cal State Channel Islands and The BoredNet Group Host

Hams and Clubs from around the Central Coast,  
showing off what makes the hobby fun for them!

When: September 13th, 10am to 6pm

Where: CSUCI campus, Central Mall

Speakers:

To Be Determined



### Activities:

$\mu$ Field Day-bring your radios!

VE Session-get that license or upgrade!

ARRL Santa Barbara Section Annual Meeting,  
led by NS6X John Kitchens

Tours of CSUCI's new Radio Room



## PRIZES!!!!

Parking is \$6 per vehicle for the  
whole day.

Food will be available at all  
campus eateries.



For additional information  
<http://theborednet.net>  
or use the QR Code



Channel Islands  
CALIFORNIA STATE UNIVERSITY

September 2025

## A selection of NETS

<b>Monday</b>	<b>Condor Connection</b> (Plays Newsline)	7:00 PM	Frazier Mountain 224.720-1.6 MHz PL156.7
<b>Tuesday</b>	<b>County ACS HF net</b>	6:30 PM	Summer 7.242 +/-    Winter 3.987 +/-
	<b>ACS Area 1 - Simi</b> Simplex net	6:45 PM	145.510 MHz Simplex
	<b>ACS Area 1 - Simi</b> Repeater net	7:00 PM	Simi Repeater 146.805 -0.6 MHz PL 100.0
	<b>ATN-CA Net</b>	7:30 PM	<a href="https://www.atn-tv.com">https://www.atn-tv.com</a>
	<b>LSB Net</b>	8:00 PM	3.908 MHz
<b>Wednesday</b>	<b>Channel Islands chapter 10-10 International</b>	10:00 AM 6:00 PM	28.34 MHz
	<b>Mesh VOIP Net*</b> Voice / video / data	8:00 PM	2.4/5.8 GHz Mesh
<b>Thursday</b>	<b>LSB Net</b>	8:00 PM	3.908 MHz
Friday			
<b>Saturday</b>	<b>SSARC SSB HF Net</b>	8:30 AM	7.240 (+ or - QRM/N) 40 meter
	<b>CW-QRP</b>	9:00 AM	7.032 MHz
	<b>Quad Squad net</b>	1:00 PM	21.365 MHz
<b>Sunday</b>	<b>The Newbie net</b>	7:00 PM	Bozo Repeater 147.885 –0.6 MHz PL 127.3
	<b>LSB Net</b>	8:00 PM	3.908 MHz
	<b>SSARC 2 Meter Net**</b>	8:30 PM	447.640 UHF repeater - PL is 131.8 Hz

**Additional** listings of **MORE** local nets can be found on the CVARC web site at: <http://www.cvarc.org>

\* For more information, see <http://www.pvarc.club/mesh/mesh-applications/>

**Our Sunday night control 8:30 on 447.640 UHF repeater - PL is 131.8 Hz:**

Aug	31	Matt KN6SEC
Sep	7	Brian KM6MIN
	14	Kevin KD6UTC
	21	Matt N3AR
	28	Ron K6RIN

September 2025

## ACS/ARES Corner

Frank Valdez KI6OQ is the Area 1 Emergency Coordinator

**We are always looking for ACS members that would like to become Net Controllers.** You will receive hands-on training at the Simi Valley PD (where we normally conduct the Weekly Net). It is both fun and at times challenging. You will gain valuable experience in running a controlled Net as well as becoming more than just familiar with the equipment in the Radio Room at the PD. If you would like to volunteer for this, just message Frank Valdez at [frankki6oq@gmail.com](mailto:frankki6oq@gmail.com).



If anyone is interested in how to set up your own packet station, RMS Winlink station, or a Mesh Node, contact Frank, he will point you in the right direction.

The **Area 1** (Simi Valley) net occurs **Tuesdays**. Generally it is just a brief check in, but usually some news about upcoming events is passed on. **Stop by and say Hi**. You do not have to do anything other than check in to test out your simplex or repeater connection.

The Tuesday **HF net** during summer months is on 7.242 +/- at **6:30 PM**.

During the winter, it is back to 3.987 lower side band.

The Tuesday **simplex net** is on 145.510 at **6:45 PM**.

The Tuesday **repeater net** is on the 146.805 (-0.6 MHz, PL 100) repeater at **7:00 PM**.

**NOTE:** Please be advised that we hold the Tuesday **countywide** net at 19:30 (7:30PM) on the Sulphur Mountain WD6EBY repeater 145.200, minus 600 KHz offset, CTCSS of 127.3. Until further notice, this will be our standard frequency for countywide communications.

Visit [vccomm.org](http://vccomm.org) for more updates.

For the Tuesday night nets:

2-Sep-25	Frank KI6OQ
9-Sep-25	Ron K6RIN
16-Sep-25	Eric KE6MLF County
23-Sep-25	Bil AB6BW
30-Sep-25	Dante W6JCQ

September 2025



## Member Updates

### Packet Radio TNC from Eric KE6MLF

Here is my shack packet station. A power supply, radio, and TNC that stays on almost all the time. There was a time (over twenty years ago) when you would sit for hours jumping around all the local packet nodes reading all kinds of stuff posted to various Bulletin Board Systems. Still a great mode for simple text messaging. The computer I use is either a laptop on the bench below the radio, or a large desktop system on the opposite bench. Nothing special required for packet radio.



September 2025

I am still working on the box for portable operation. Here is the box with two radios and a few power distribution items mounted on the back wall. It now has LED lighting controlled by the switch and knob on the left side. New is a tiny Windows laptop (Courtesy of Glen WA6GNB) and a TNC. The laptop is really a netbook, a bit dainty. It has a low power processor, but directly runs on 12 volt power! Connected it to the TNC, I think the computer will run packet radio just fine.



September 2025

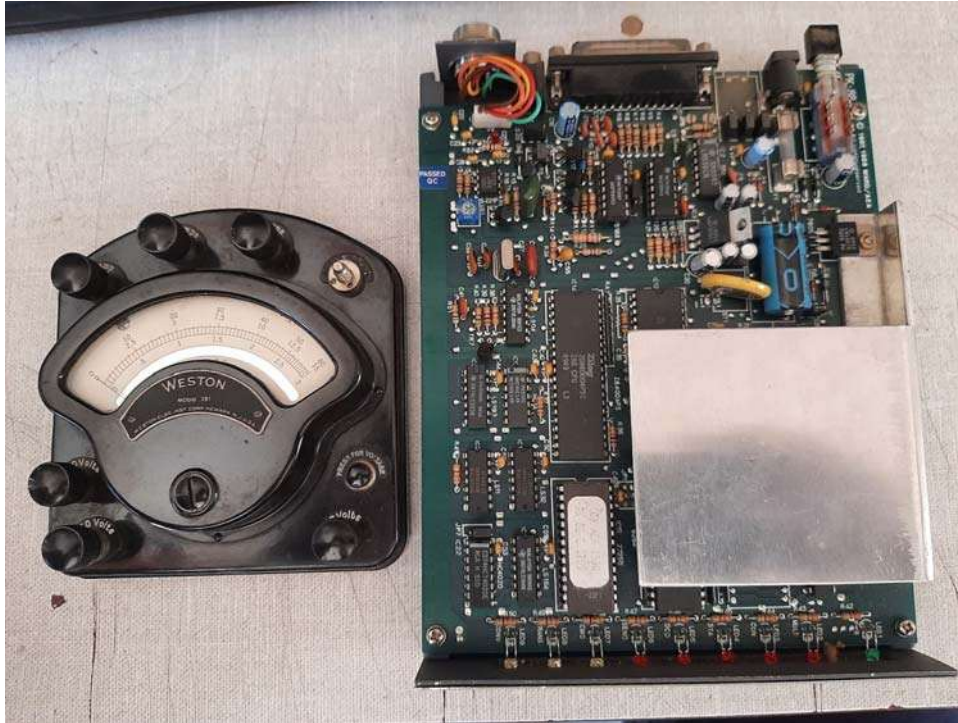
I got the AEA PK-88 TNC at the TRW swapmeet over 20 years ago, it has a label from 1990 on the computer memory chip. After being on for an hour or two, I noticed that the top surface was a bit warm. Opened the case just to poke around. I see a big blue electrolytic cap (blue tube with black arrow marks), but no corrosion or leaking electrolyte. The large aluminum heat sink is for the linear voltage regulator (the black component mounted on the bent part of the heat sink). Nothing wrong there either.



September 2025



I dug around and found the manual and then actually read it (gasp!). It said the current draw was 500 mA. Off to the pile of stuff, and dig out my favorite current meter. When all connected, it read right on 500 mA.

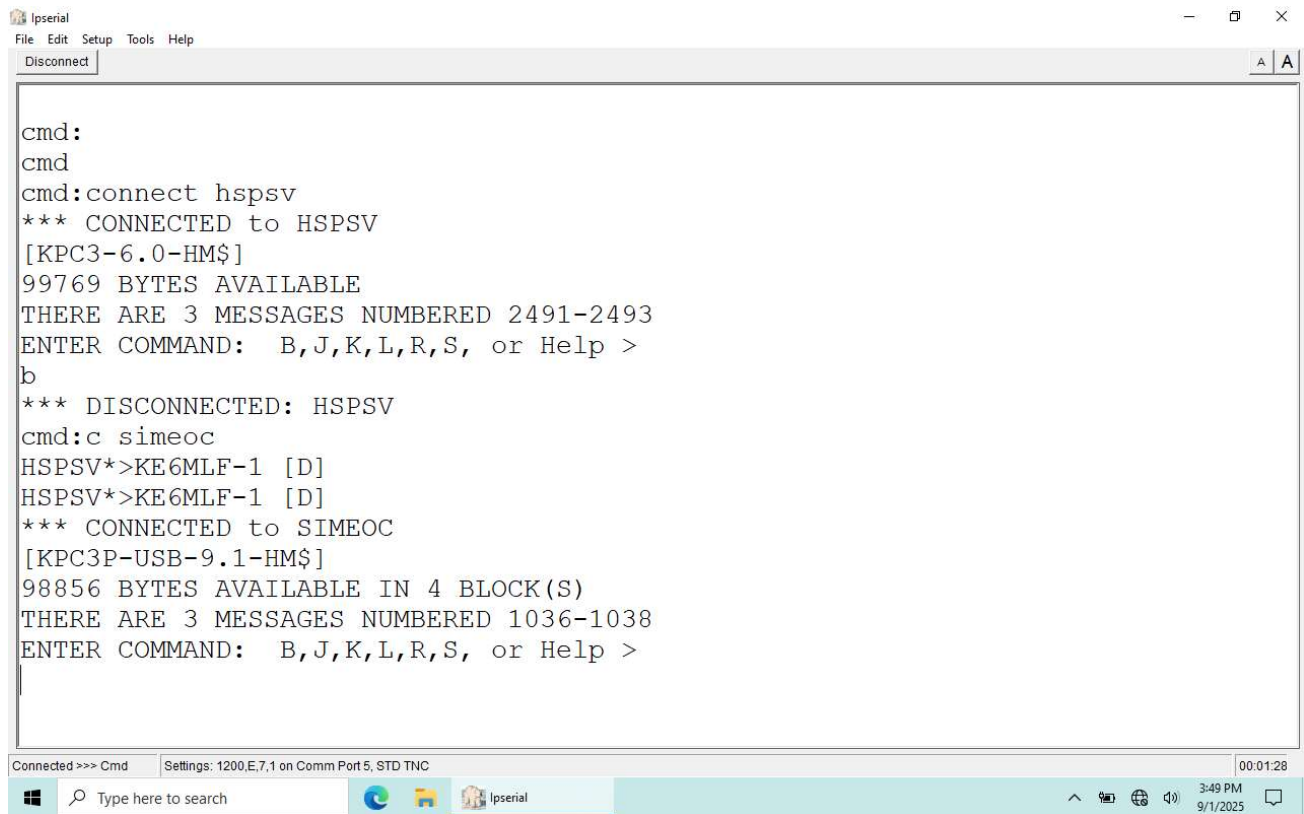


So, don't fix what ain't broken. Put the cover back on and went to the soldering bench to make a proper cable for the B-Tech radio already mounted in the box.



September 2025

Here is a screen shot of the (new to me) TNC, Radio, and Computer (Thank you Glenn) connecting to both the Hospital and the Police Station - **Works!**



The screenshot shows the Ispserial application window. The title bar reads 'Ispserial' with standard window controls. The menu bar includes 'File', 'Edit', 'Setup', 'Tools', and 'Help'. A 'Disconnect' button is in the top-left corner of the main area. The main text area contains the following text:

```
cmd:
cmd
cmd:connect hpsv
*** CONNECTED to HSPSV
[KPC3-6.0-HM$]
99769 BYTES AVAILABLE
THERE ARE 3 MESSAGES NUMBERED 2491-2493
ENTER COMMAND:  B,J,K,L,R,S, or Help >
b
*** DISCONNECTED: HSPSV
cmd:c simeoc
HSPSV*>KE6MLF-1 [D]
HSPSV*>KE6MLF-1 [D]
*** CONNECTED to SIMEOC
[KPC3P-USB-9.1-HM$]
98856 BYTES AVAILABLE IN 4 BLOCK(S)
THERE ARE 3 MESSAGES NUMBERED 1036-1038
ENTER COMMAND:  B,J,K,L,R,S, or Help >
```

At the bottom of the window, a status bar shows 'Connected >>> Cmd' and 'Settings: 1200,E,7,1 on Comm Port 5, STD TNC'. The Windows taskbar at the very bottom shows the search bar, taskbar icons for Edge, File Explorer, and Ispserial, and the system clock indicating 3:49 PM on 9/1/2025.

September 2025

## **Simi Valley Radio Resources** from Eric KE6MLF

At the last meeting, we started to list the various radio resources located throughout Simi Valley. Here is the start of a more complete list, might end up as a map / handout:

The Mellow Lane site with 146.805 is about 1/2 mile south of Royal High School. The 805 repeater lives here along with the Disaster Service Workers (DSW) WEST repeater.

The DSW EAST site is roughly at the 118 and Yosemite Avenue.

The Simi North site is near the Adventist Hospital. The 446 W6BI repeater is there, along with DARN 29, on 447.600. The DARN repeater is linked throughout most of Southern California.

The WA6FGK repeater is West of Sinaloa and well south of Royal.

The Ventura County Auxiliary Communication Service (ACS) Police Station radio room. The radio room has packet, 2 meter, 1.2 meter, 70 centimeter, and HF.

The 220 repeater that WAS on the roof of the police station has been removed pending a decision to repair, mothball, or scrap.

The second ACS radio room is located in the Simi Adventist Hospital at Sycamore and Avendia Simi. The Hospital radio room has 2 meter packet, and 2 meter, 1.2 meter, and 70 centimeter voice.

If you really want more details, a good place to start would be our own web site at <http://simisettlers.org/rptrs.htm>.

## **SimiNorth Work Party - 8/28/2025**

**by Orv W6BI**

Friday afternoon/evening a group of local hams went to the SimiNorth radio site. They worked on the structure to hold the solar panels. They dug four holes in very hard dirt, dropped rebar forms into each, put posts into the holes, and poured concrete in each hole. All materials were provided by Donnie KJ6TTN, who designed the platform for the panels.

When the concrete has dried, the frame for the solar panels will be mounted on the posts. Other tasks are to mount the panels, bury conduit to the repeater cabinet to run the power cables, run the power cables into the cabinet, and connect the panels to the cabinet power system with a solar controller (also purchased by Donnie).

Later on, we'll put weed fabric down and cover the area with pea gravel for weed abatement/fire prevention.

We hope to have everything complete in the next month.

Hams helping on the work party: Donnie KJ6TTN; John NS6X; Kerwyn N6YHX; Frank KI6OQ; Eric KB6DYJ; Dave KM6FQ; and Orv W6BI.

A big thanks for all for a tough few hours on the hill!

September 2025





September 2025





September 2025





September 2025





September 2025





September 2025



September 2025

## Internet Resources

simisettlers.org - us!

cvarc.org - Conejo Valley Amateur Radio Club

k6mep.org - Ventura County Amateur Radio Club

vcars.org - Ventura County Amateur Radio Society

pvarc.club - The home of many of the counties repeaters

arednmesh.org - Amateur Radio Emergency Data Network

vccomm.org - Ventura County ACS / ARES

www.arrl.org - American Radio Relay League

archive.org/details/simi-settlers-arc - Our old newsletters!

qrz.com - forums, for sale, articles - **Create your profile here!**

eham.net - forums, for sale, articles (kind of a zombie site)

[www.theborednet.net](http://www.theborednet.net) - a local bulletin board including net schedules and **stuff** for sale!

Under the **groups.io** banner (a free account is required):

groups.io/g/SimiSettlers/messages - A great place to post

groups.io/g/SIMI-VALLEY-HAMMESHNET/messages

vc-accs.groups.io/g/main/messages

vc-accs.groups.io/g/area-1/messages



## SSARC Marketplace

This section of the newsletter is for Simi Settler club members to post various used or previously owned items for sale that they may no longer have a need or use of. Please submit a brief description of the sale items (along with a photo if possible) and suggested price to Eric Oberg KE6MLF, the newsletter editor, at least two days before newsletter publication. It is suggested that a portion of each sale be donated to the SSARC treasury to help support the club's several activities. The term "OBO" means "Or Best Offer" and serves only as a starting point in negotiating a fair price.

.....

### LAFAYETTE RADIO MODEL TE-50 TUBE TESTER



This portable tube tester from Lafayette Radio is perfect for testing vacuum tubes from classic radios and television receivers sold back in the day. It has eight tube sockets capable of testing standard Octal, Loctal, 7-pin miniature, 9-pin miniature types as well as 9- and 12-pin Compactron tubes and nuvistor tubes that were popular back in the 1950's and 1960's. Tests include leakage, shorts and tube emission (e.g.- gain or  $\mu$ -measurements). The tester includes a slide-out chart drawer plus supplemental charts for newer-type tubes listing the required selector switch and slide switch settings for each tube under test including a test clip for testing tubes with high-voltage anode top caps such as those used for horizontal sweep circuits of earlier televisions. Similar Lafayette Model TE-50 Tube Testers are listed on E-Bay for \$99.99 or more.

Condition: Very Good    Price: \$5 or OBO. Contact Mike Tweedy KV6I (805-231-9683)



## From Glenn WA6GNB

GrandStream # 1620/1625 telephone for sale. New – still in the original box. Compatible with our MESH system. \$30.00 Contact Glen at gnb.2112@yahoo.com

## From Orv W6BI

(orv.beach@gmail.com)

Signalink USB - interface between radio and computer for digital modes - \$75



## From Joe W6JWP

MFJ 259 Antenna Analyzer 1.8 to 170MHz \$100.00 OBO.

Good working unit with extras.





Contact [joe.w6jwp@gmail.com](mailto:joe.w6jwp@gmail.com)

September 2025

## Anycubic Mega Pro 3D FDM Printer w/Laser Engraving

Upgraded flexible magnetic steel bed.

The power supply and extruder fans make noise when first turned on but it goes away after about 30 seconds.

Includes glass bed, tools, spare extruder and nozzles, laser head and protective glasses.

\$75.00 or best offer.



September 2025



Contact [joe.w6jwp@gmail.com](mailto:joe.w6jwp@gmail.com)

September 2025



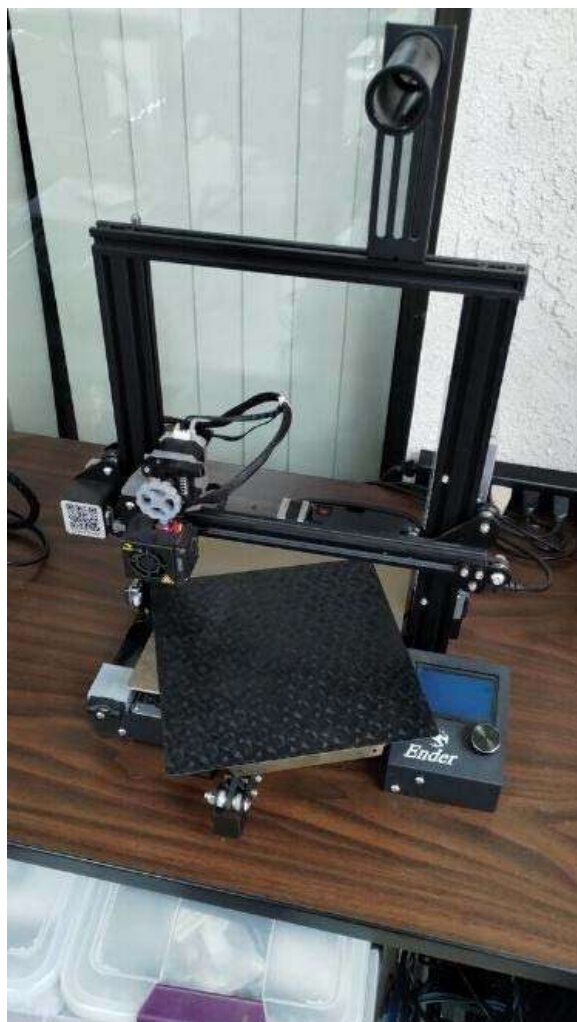
Ender 3 v1 3D FDM Printer

Modified for direct drive.

Upgraded flexible magnetic steel bed. Includes a spare textured steel bed.

Good basic machine

\$75.00 or best offer.



Contact [joe.w6jwp@gmail.com](mailto:joe.w6jwp@gmail.com)

September 2025

Simi Settlers' Amateur Radio Club Web Page: <http://www.simisetters.org/index.htm>  
 Simi Settlers' ARC Yahoo Group: <http://groups.yahoo.com/group/SimiSettlersARC>  
 Mail: P.O. Box 2125 Simi Valley, CA 93062-2125

Simi Settlers' Leadership				
<b>President</b>	Brian Hernandez	KM6MIN	(805) 813-7595	km6min_bh@yahoo.com
<b>Vice President</b>	Matt Kaufman	N3AR	(818) 425-0920	matt.d.kaufman@gmail.com
<b>Secretary</b>	Ron Nelson	K6RIN	(805) 797-6315	rnelson759@sbcglobal.net
<b>Treasurer</b>	Matt Griffin	KN6SEC	(661) 361-5955	mgriffi79@yahoo.com
Committee Chairpersons				
<b>Webmaster</b>	Matt Griffin	KN6SEC	(661) 361-5955	mgriffi79@yahoo.com
<b>Newsletter</b>	Eric Oberg	KE6MLF	(805) 791-0745	ericoberg1@gmail.com
<b>Membership</b>	Jim Parker	KJ6LXJ	(805) 368-6745	kj6lxj@gmail.com
<b>PIO</b>	VACANT			
<b>Raffle Prizes</b>	Matt Griffin	KN6SEC	(805) 433-4513	mgriffi79@yahoo.com
<b>Youth Coordinator</b>	VACANT			
<b>Historian</b>	Mike Tweedy	KV6I	(805) 231-9683	mtweedy@roadrunner.com
<b>Net Coordinator</b>	Brian Hernandez	KM6MIN	(805) 813-7595	km6min_bh@yahoo.com
<b>Food Services</b>	VACANT			
<b>Room Coordinator</b>	VACANT			
Elmers and Members at Large				
<b>Past-President</b>	Bill Woods	AB6BW	(818) 694-9019	AB6BW1@gmail.com
<b>Advisor</b>	Bill Everett	KI6KSV		ki6ksv@gmail.com
<b>Advisor Morse Code</b>	John Percival	WI6O		johnspercival1@gmail.com
<b>Advisor Mesh</b>	Orv Beach	W6BI		orv.beach@gmail.com

September 2025

# Simi Settlers Amateur Radio Club

P.O. Box 2125 Simi Valley, Ca 93062-2125 --- (www.simisetters.org)

## Membership Application



### Type of Application:

New Member ☐ ☐  
Renewal ☐ ☐

### Type of Membership:

Individual (\$25/yr) ☐ ☐  
Family (\$30/yr) ☐ ☐

Name: \_\_\_\_\_ Day & Month of Birth: \_\_\_\_\_  
(Omit year)

Call: \_\_\_\_\_ Class: \_\_\_\_\_ ARRL: Yes ☐ ☐ No ☐ ☐

Address: \_\_\_\_\_ City: \_\_\_\_\_ State: \_\_\_\_\_ Zip: \_\_\_\_\_

Phone: (\_\_\_\_) \_\_\_\_\_ Alt. Phone: (\_\_\_\_) \_\_\_\_\_

E-Mail Address: \_\_\_\_\_

### Additional Family Members:

Name: \_\_\_\_\_ Day & Month of Birth: \_\_\_\_\_  
(Omit year)

Call: \_\_\_\_\_ Class: \_\_\_\_\_ ARRL: Yes ☐ ☐ No ☐ ☐

Name: \_\_\_\_\_ Day & Month of Birth: \_\_\_\_\_  
(Omit year)

Call: \_\_\_\_\_ Class: \_\_\_\_\_ ARRL: Yes ☐ ☐ No ☐ ☐

Name: \_\_\_\_\_ Day & Month of Birth: \_\_\_\_\_  
(Omit year)

Call: \_\_\_\_\_ Class: \_\_\_\_\_ ARRL: Yes ☐ ☐ No ☐ ☐

Badges requested: Yes ☐ ☐ No ☐ ☐ How many? \_\_\_\_\_ X \$18.00 = \$ \_\_\_\_\_

Name (s) Call(s): \_\_\_\_\_

Shirt Printing: Yes ☐ ☐ No ☐ ☐ How many? \_\_\_\_\_ X \$25.00 = \$ \_\_\_\_\_

Name (s) Call(s): \_\_\_\_\_ (Self Supplied Polo Shirt, no emblem or pocket)

Hats Requested: Yes ☐ ☐ No ☐ ☐ How many? \_\_\_\_\_ X \$20.00 = \$ \_\_\_\_\_

Name (s) Call(s): \_\_\_\_\_

### OFFICE USE ONLY

Application type: New ☐ ☐ Renewal ☐ ☐ Membership type: Individual ☐ ☐ Family ☐ ☐

Date Received: \_\_\_\_\_ Amount Received: \_\_\_\_\_ Database completed: \_\_\_\_\_

Badges and Shirts ordered: \_\_\_\_\_

September 2025