



Simi Settlers' Amateur Radio Club

Short Circuit

1	Timely Information
2	Nets of Interest ACS/ARES Corner
3	Member Updates
4	The Marketplace
5	Simi Settlers' Leadership
6	Membership Form

The next **meeting** is at the
Simi Senior Center,
3900 Avenida Simi, Simi Valley.

Thursday November 14, 2024 at 7:00 PM.

The next **Pizza** Night is at
Toppers Pizza, 2408 Erringer Rd, Simi Valley
November 7 at 6:00 PM

Getting to be a bit like fall.



October 2024

Nets of Interest

Sunday	Monday	Tuesday	Wednesday	Thursday	Friday	Saturday
LSB Net 8pm 3.908 MHz SSARC 2 Meter Net* 8:30 pm SMRA-ERN Repeater 146.805 -0.6MHz PL100.0 or 445.580 -5.0MHz PL100.0 The Newbie net 7 pm, Bozo Repeater 147.885 (- 127.3)	Condor Connection 7pm (Plays Newslines) Frazier Mountain 224.720-1.6 MHz PL156.7	LSB Net 8pm 3.908 MHz ACS Area 1 Simi Valley SMRA-ERN 7:05pm Repeater 146.805 -0.6MHz PL100.0 or 445.580 -5.0MHz PL100.0 ATN-CA Net 7:30pm http://atn-tv.org/netnights.htm ACS Area 1 Simplex net, 6:45 PM on 145.510MHz	Channel Islands chapter 10-10 International 28.34 MHz at 10AM and 6PM Mesh VOIP Net* 8pm 2.4/5.8 GHz Mesh	LSB Net 8pm 3.908 MHz		SSARC SSB HF Net 8:30am 7.240 (+ or - QRM/N) 40 meter CW-QRP 9am 7.032 MHz Quad Squad net 1PM on 21.365 MHz

Additional information on local nets can be found on the CVARC web site at: <http://www.cvarc.org>

* For more information, see <http://www.pvarc.club/mesh/mesh-applications/>

Here are our 8:30 PM Sunday night net controllers for the next month:

Oct	6	Brian KM6MIN
	13	Kevin KD6UTC
	20	Matt N3AR
	27	Ron K6RIN
Nov	3	Matt KN6SEC
	10	Kerwyn N6YHX
	17	Brian KM6MIN
	24	Kevin KD6UTC

October 2024

ACS/ARES Corner

Frank Valdez KI6OQ is the Area 1 Emergency Coordinator

We are always looking for ACS members that would like to become Net Controllers. You will receive hands-on training at the Simi Valley PD (where we normally conduct the Weekly Net). It is both fun and at times challenging. You will gain valuable experience in running a controlled Net as well as becoming more than just familiar with the equipment in the Radio Room at the PD. If you would like to volunteer for this, just message Frank Valdez at frankki6oq@gmail.com.



If anyone is interested in how to set up your own packet station, RMS Winlink station, or a Mesh Node, contact Frank, he will point you in the right direction.

The **Area 1** (Simi Valley) net occurs Tuesdays. Generally it is just a brief check in, but usually some news about upcoming events is passed on. **Stop by and say Hi.** You do not have to do anything other than check in to test out your simplex or repeater connection.

The **HF net** during summer months is on 7.242 +/- at **6:30 PM**.

The **simplex net** is on 145.510 at **6:45 PM**.

The **repeater net** is on the 146.805 (-, PL100) repeater at **7:00 PM**.

NOTE: Please be advised that we hold the Tuesday **countywide** net at 19:30 (7:30PM) on the Sulphur Mountain WD6EBY repeater 145.200, minus 600 KHz offset, CTCSS of 127.3. Until further notice, this will be our standard frequency for countywide communications.

Visit vccomm.org for more updates.

(ed - I send in my packet and winlink check in usually Sunday or Monday night. Leaves me free to do the voice check-ins with just a handheld while out and about.)

October 2024

Member Updates

Santa Paula Work Party - Orv W6BI

From Paul WD6EBY:

Hello All,

We had a very successful day today at the South Mtn microwave relay site. I want to express my deepest thank you to all team members for their hard work on the hilltop today. If you see or talk to these folks please give them a hardy thank you for a job well done.

Rob Hanson
Steve Leong
Keith Elliott
Pedro Morallis
Eric Oberg
Les Merryman
Eric Beach
Orv Beach
Mark Swain
Rich Williamson
Paul Strauss

The team was able to install 2 each chain mounts on the telephone poles to support the antennas. The team prepared most of the antennas on the mast/poles on the ground then the pole assemblies tilted up and mounted to the chain mounts. Once the mast/poles were in place the microwave dishes were installed, 5GHz to Camarillo Hills, 10 GHz to Sulphur Mtn and 5 GHz to Rasnow Peak. On our next site visit the team will install the 3rd chain mount and the 10GHz dish to Verdugo Peak will be a placeholder for the future 10GHz link to Santa Ynez Peak in Santa Barbara. While the antenna systems were being installed a parallel team effort completed the grounding system interconnecting the cabinet to the antenna systems.

Within the next week or so I will have the network switch configured and the mesh nodes will come online. At present the cameras are operational on the backbone network and when the mesh nodes come online the cameras will be accessible from the mesh. See the short attached video clip.

Orv was our photographer today and took many outstanding pictures. Thank you Orv.

All in all this was a long but rewarding day.

From the PVTAC directors, Thank You All.
Paul Strauss WD6EBY
Hovan Salibian KI6BQL
Orv Beach W6BI

PS. Original email from Orv Beach, I just expanded upon it.

October 2024



October 2024



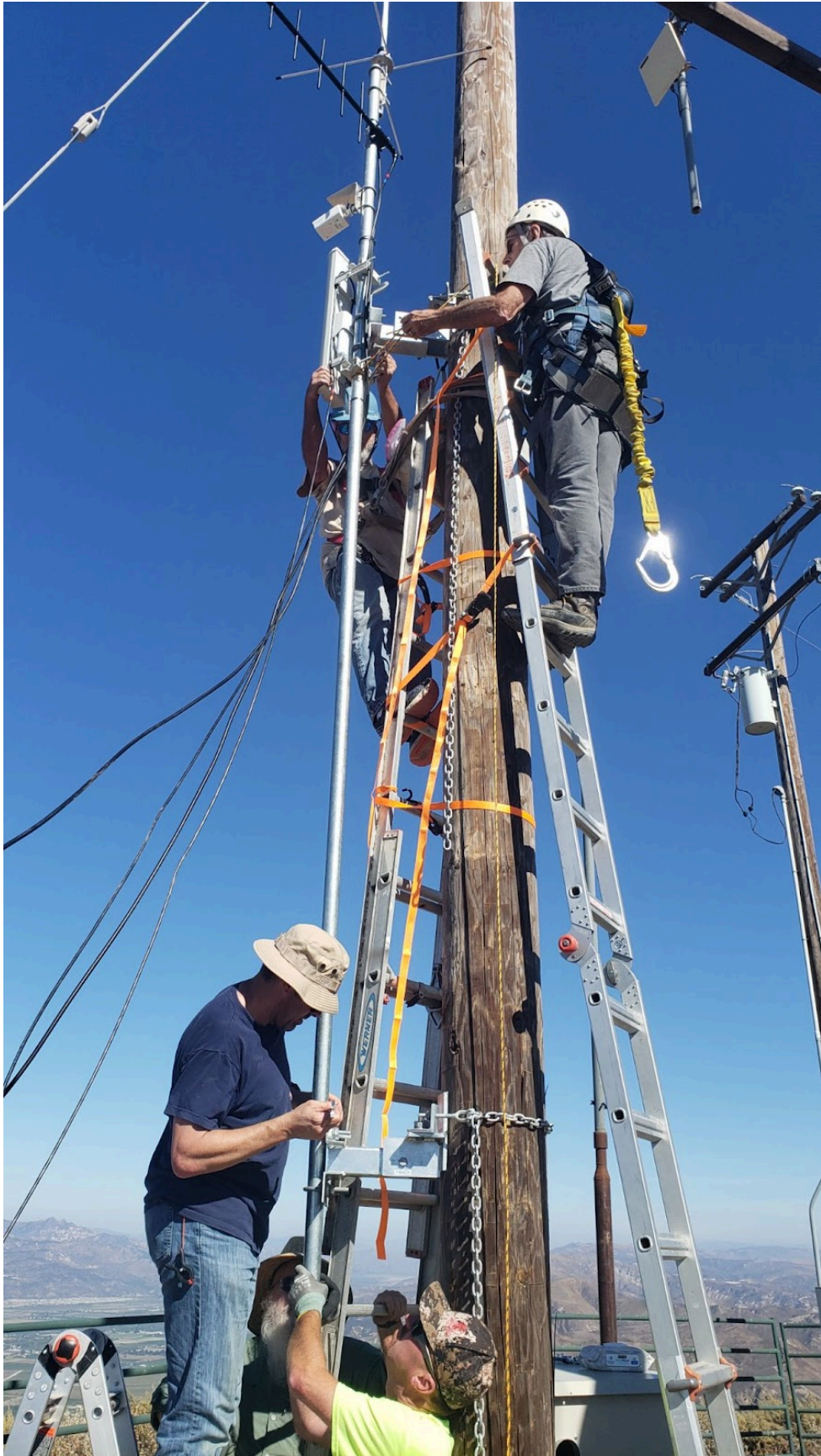
October 2024



October 2024



October 2024



October 2024



October 2024



October 2024

Jamboree on the Air at Monte Vista School

Photos by Donnie KJ6TTN and Matt KE6SEC

Looks like Ron K6RIN, Frank KI6OQ, Kerwyn W6YHX, Donnie KJ6TTN, Richard KN6RCC, and Matt KN6SEC.



October 2024



October 2024



October 2024



October 2024

Sound Card Interface - Eric KE6MLF

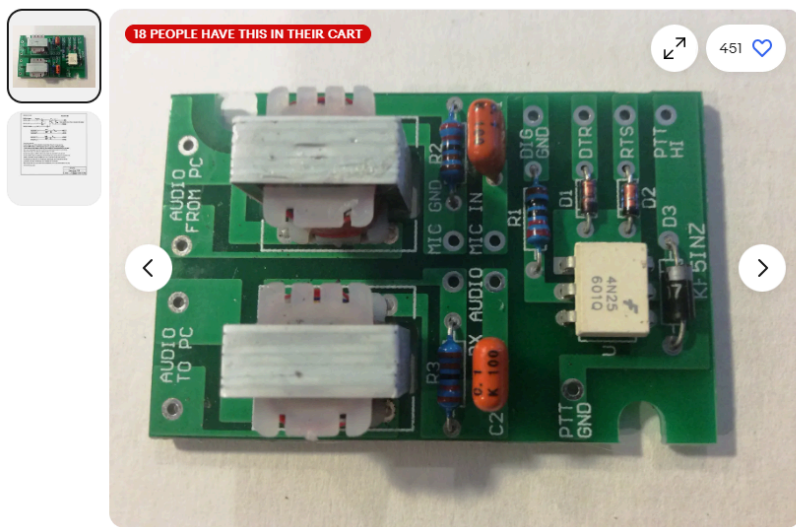
If you like to play with radios, but find talking to actual people a bit off putting, you can try the **digital modes**. To do most of the digital modes, you have to have a Terminal Node Controller (TNC) or a computer with a sound card.

A TNC directly turns digital data to audio tones. For a sound card, a program running on the computer translates the digital data to audio tones, and sends it out via the sound card. You can use either an internal sound card, or an external one in the form of a USB dongle.

Along with that, you need some isolation to keep computer noise out of the radio audio. The usual form is two small transformers, and this is referred to as a **Sound Card Interface**.

Some products, like "DigiRig" or Tigertronics Signalink have both a sound card AND the isolation built in.

I made a sound card interface 15 years ago, but it is in a dedicated box for my HF radio. I used to do something called PSK31, and slow scan TV. Great fun, but what to get so I can explore the current modes like Fldigi? Joe W6JWP pointed me to Ebay, and this product:



**"EASY DIGI™" Interface Card, FT-8 PSK
RTTY SSTV NBEMS JT-65 FT-8 FT-4 others**
Work PSK, RTTY, SSTV, NBEMS, JT-65, OTHERS HF, VHF, UHF

[cliffordwareham](#) (6308)
100% positive · Seller's other items · Contact seller

US \$9.80

Condition: **New** ⓘ

Quantity: More than 10 available - 1,107 sold

[Buy It Now](#)

[Add to cart](#)

[Add to watchlist](#)

I got 2 kits for under \$15, one for home and one for a portable station. Probably should think about putting it in a box of some kind. That takes care of the audio isolation, but what about Push to Talk (PTT)? Your computer has to be able to push the button on the side of the microphone. (Some people use Voice Operated Transmission (VOX), but I prefer the hardware method).

Most of the programs used for digital operation have options to select various signals, but a common method is to use Clear to Send (CTS), or Data Terminal Ready (DTR). These signals are **handshaking** between devices for who has data, or who is ready to receive data. On Amazon, I got this cable with the **FULL set of handshaking** signals wired up. Many cables will only have **transmit** data, **receive** data, and **ground**.



Roll over image to zoom in



DTech 3 Feet USB to Serial Female Adapter Cable DB9 RS232 to USB 2.0 Cord with Prolific PL2303 Chip Windows 11 10 8 7 Mac Linux

Brand: DTech

4.3 ★★★★★ 572 ratings | [Search this page](#)

\$13⁸⁸

FREE Returns

Coupon: Apply 10% coupon [Shop items >](#) | [Terms](#)

30-day refund/replacement

Size: **3ft RS233 cable**

 \$13.88

 \$14.98

 \$16.98

Brand	DTech
Connector Type	USB Type A
Cable Type	VGA
Compatible Devices	Desktop computer, Laptop, Microcontroller, Router, Modem, Printer, PDA, Router, Radio, GPS
Special Feature	Data Transfer, Lightweight

About this item

- (NOT VGA Monitor Cable) 3ft USB to serial FEMALE adapter cable allows PC computer to connect RS-232 serial device that communicate through COM ports
- PL2303 Chip RS232 serial cable to USB adapter is designed for connecting 9 pin Serial devices such as DB-9 equipped PC, routers, GPS, Programming machine, barcode scanner, label writer, serial modem, digital camera, card reader, palm PC and digital organizer, etc
- 3 ft serial to USB adapter cable with standard USB Type A Male port and DB9 female serial connector (9 wire pinout 1-9: DCD, RXD, TXD, DTR, GND, DSR, RTS, CTS, RI)

I like these separate building blocks (sound card, interface, PTT control), rather than a complete solution such as the Signallink. Much cheaper, and lets me make it to my configuration exactly as required.

I went to the vccomm.org site and got the installation and configuration guide for Fldigi, and a link of where to download the program.

Now that I have audio isolation, a PTT solution, and the Fldigi program downloaded and installed, I need a bit of time to wire this all together. Stay tuned!

October 2024

Orv goes Big - (ed ke6mlf)

Orv W6BI and Eric B KB6DYJ went to this year's PacificCon and picked up their new mast. Here it is, collapsed and parked at Donnie KJ6TTN's "lot of storage". Somebody acquired it 2 years ago, and the Beaches transported it up for them during that year's PacificCon. Turns out, they were just kidding, so it has bounced back to Orv.



October 2024

Here is the same mast 2 years ago before it got driven up. Puny human for scale is Eric B. Maybe we can turn it into some kind of amusement park ride? Might need a bit of work before it is really usable.



October 2024

Simi Valley Days - photos by Donnie KJ6TTN



Frank, Ron, Bill, and Kerwyn.



Kerwyn aiming a Mesh dish, Bill watching signal strength.

Matt and Frank doing nothing useful.

October 2024

Pacificon - photos by Matt N3AR



October 2024



October 2024



October 2024

Internet Resources

simisettlers.org - us!

cvarc.org - Conejo Valley Amateur Radio Club

k6mep.org - Ventura County Amateur Radio Club

vcars.org - Ventura County amateur Radio Society

pvarc.club - The home of many of the counties repeaters

arednmesh.org - Amateur Radio Emergency Data Network

vccomm.org - Ventura County ACS / ARES

www.arrl.org - American Radio Relay League

archive.org/details/simi-settlers-arc - Our old newsletters!

qrz.com - forums, for sale, articles

eham.net - forums, for sale, articles (kind of a zombie site)

www.theborednet.net - a local bulletin board including net schedules and **stuff** for sale!

Under the groups.io banner (a free account is required):

groups.io/g/SimiSettlers/messages - A great place to post

groups.io/g/SIMI-VALLEY-HAMMESHNET/messages

vc-accs.groups.io/g/main/messages

vc-accs.groups.io/g/area-1/messages

SSARC Marketplace

This section of the newsletter is for Simi Settler club members to post various used or previously owned items for sale that they may no longer have a need or use of. Please submit a brief description of the sale items (along with a photo if possible) and suggested price to Eric Oberg KE6MLF, the newsletter editor, at least two days before newsletter publication. It is suggested that a portion of each sale be donated to the SSARC treasury to help support the club's several activities. The term "OBO" means "Or Best Offer" and serves only as a starting point in negotiating a fair price.

.....

MFJ-335 MOBILE ANTENNA MAGNETIC MOUNT



This heavy-duty 5" diameter magnetic antenna mount uses a powerful 2.5 pound magnetic base for secure mounting on top of most vehicles. It features a standard 3/8-24 threaded receptacle for attaching various hamstick or other whip antennas as needed. The 9-1/2 ft. length of RG-58 cable has a standard PL-259 UHF end connector. Typical cost of this magnetic antenna mount from MFJ or DX Engineering is \$29.95.

Condition: Excellent Price: \$5 or OBO. Contact Mike Tweedy KV6I (805-231-9683)

COMET CF-4160 DUPLEXER



The Comet CF-4160 is a 2m/70cm duplexer that can act as a splitter to provide separate VHF and UHF coax outputs that can feed separate 2m and 70cm antennas for dual band transceivers having a single coax output. Alternately, it can combine outputs from separate VHF/UHF rigs or a transceiver having separate VHF and UHF coax outputs that can be combined together to use a single coax cable that connects to a VHF/UHF antenna such as a MFJ-1760 or MFJ-1768 dual band Yagi. For low bands such as 2m, the frequency range is from 1.3 to 170 MHz. For high bands such as 70cm, the frequency range is 350 to 540 MHz. UHF-type coax connectors provided are a single female SO-239 and two male PL-259 connectors. The Comet CF-4160 duplexer currently sells for \$52.98 from GigaParts.

Condition: Excellent Price: \$10 or OBO. Contact Mike Tweedy KV6I (805-231-9683)

October 2024

PARA DYNAMICS PDC9 SWR & POWER METER



The Para Dynamics PDC9 inline SWR / Power Meter operates from 144MHz to 430MHz which includes the 2m - 70cm ham bands. The unit has two power ranges, 15W and 60W. Unit provides two female SO-239 coax connectors. Unit measures approximately 2" X 2.5" X 1". A similar unit recently sold on eHam.net for \$25.

Condition: Excellent Price: \$5 or OBO. Contact Mike Tweedy KV6I (805-231-9683)

October 2024

RADIO SHACK PRO-2044 SCANNER



The PRO-2044 is an 80-channel programmable scanner capable of receiving both AM and FM modulated signals in the HF, VHF and UHF bands ranging from 29 MHz to 512 MHz. The scanner's channels are divided into 10 channel-storage banks of 8 channels each. The scanner also has an additional 10 monitor memories available for temporary frequency storage if desired. The unit features keypad entry programming buttons plus standard volume and squelch controls to set desired audio level. The unit has a built-in internal speaker plus a headphone output jack. Power requirement is 12VDC with an AC adapter included. Rear antenna input is a BNC-type connector for connecting to an outdoor antenna or to a small collapsible whip (included). Size is 8" wide x 7" deep x 3" high. Instruction manual is included.

Condition: Very Good Price: \$10 or OBO. Contact Mike Tweedy KV6I (805-231-9683)

October 2024

REALISTIC PRO-42 SCANNER



The PRO-42 is a handheld 10-channel programmable scanner radio capable of receiving FM frequencies in three separate bands: 30 MHz to 54 MHz (VHF Low), 138 MHz to 174 MHz (VHF High) and 380 MHz to 512 MHz (UHF). The unit features keypad entry programming buttons plus standard volume and squelch controls to set desired audio level. The display is an LCD type with a backlit display for improved readability in low-light conditions. It includes a channel lockout capability with an optional 2-second scan delay to eliminate missed replies. The unit has a built-in internal speaker plus a headphone output jack. Antenna input is a BNC-type connector for connecting to an 8-inch flexible antenna (included) or an outdoor antenna if desired. Power (9VDC) is provided by six internal AA batteries or via an external power jack. A separate charger input is also provided should rechargeable 1.25 volt nickel-cadmium batteries be used instead. A convenient belt clip is also provided for ease of use.

Dimensions are 6.75" tall x 2.75" wide x 1.50" deep. Weight is 15.9 Oz.

Condition: Very Good Price: \$5 or OBO. Contact Mike Tweedy KV6I (805-231-9683)

October 2024

LAFAYETTE RADIO MODEL TE-50 TUBE TESTER



This portable tube tester from Lafayette Radio is perfect for testing vacuum tubes from classic radios and television receivers sold back in the day. It has eight tube sockets capable of testing standard Octal, Loctal, 7-pin miniature, 9-pin miniature types as well as 9- and 12-pin Compactron tubes and nuvistor tubes that were popular back in the 1950's and 1960's. Tests include leakage, shorts and tube emission (e.g.- gain or μ -measurements). The tester includes a slide-out chart drawer plus supplemental charts for newer-type tubes listing the required selector switch and slide switch settings for each tube under test including a test clip for testing tubes with high-voltage anode top caps such as those used for horizontal sweep circuits of earlier televisions. Similar Lafayette Model TE-50 Tube Testers are listed on E-Bay for \$99.99 or more.

Condition: Very Good Price: \$10 or OBO. Contact Mike Tweedy KV6I (805-231-9683)

October 2024

RADIO SHACK MODEL 15-1244 RF MODULATOR



This Radio Shack RF modulator can provide an NTSC type RF signal to older TVs or video monitors that require an analog signal as an input. The output is user-selectable for either channel 3 or channel 4 output and can provide 75 ohm or 1k ohm impedance. Input is AV video/video using standard phono-type plug cables. An RF coax jumper cable is provided.

Condition: Excellent Price: \$5 or OBO. Contact Mike Tweedy KV6I (805-231-9683)

October 2024

From Glenn WA6GNB

GrandStream # 1620/1625 telephone for sale. New – still in the original box. Compatible with our MESH system. \$30.00 Contact Glen at gnb.2112@yahoo.com

From Sergey KT4UFA - ut4ufa@gmail.com

TYT MD-390 GPS for sale.

It's hardly been used, mostly sitting on a shelf for radio traffic monitoring, so it's in excellent condition.

Features include supports both analog and digital DMR, GPS function, TXT messaging, group and private calling, as well as a logbook.

Additionally, there's the option to download custom firmware, offering numerous new features and unique customization options.

Included in the original set are:

- DMR transceiver
- Antenna
- Battery
- Charging station with power supply
- Earphones
- Programming cable

Price: \$75



October 2024

Alinco DX-SR8

Removable face, for remote installation in car or truck.

1.6-30MHz

CW, SSB, AM, FM.

10, 50, 100 Watt.

Very good condition.

Included in the original set are:

HF transceiver

Microphone

Power cord

\$400, or BO.



October 2024

AC-DC switching power supply.

Input 115V AC 50-60Hz

Output 12V DC 5.4 Amps

It has small trimer to fine adjust output voltage

Dimensions: 7.5*5*2.5

Free, self pickup.

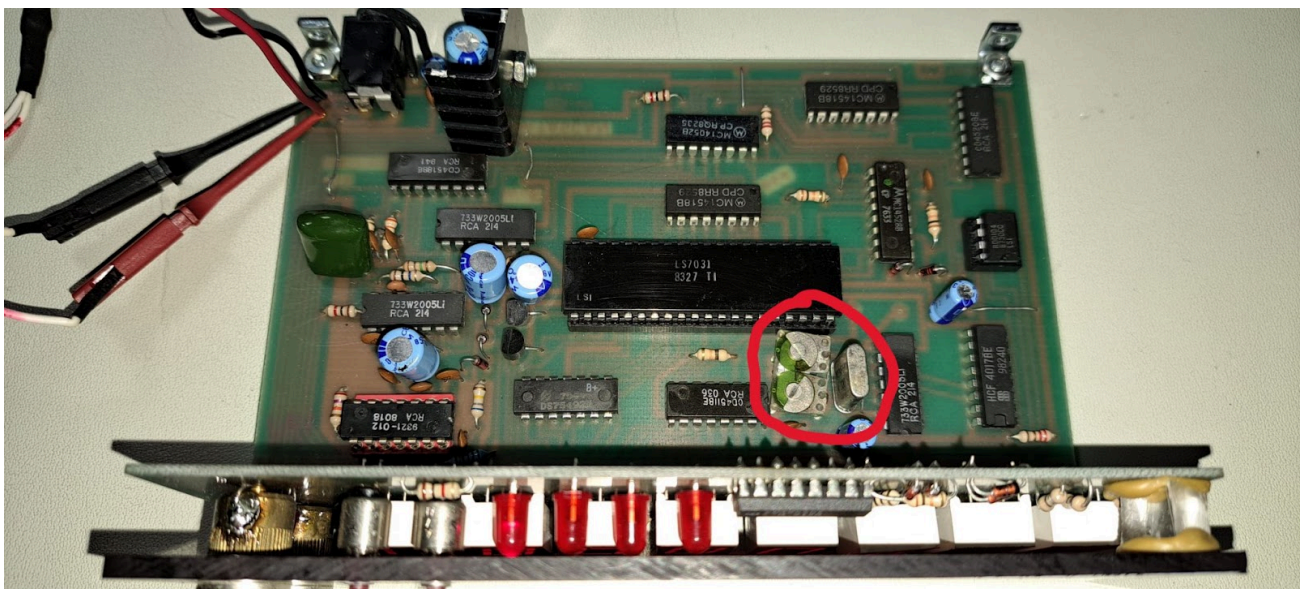
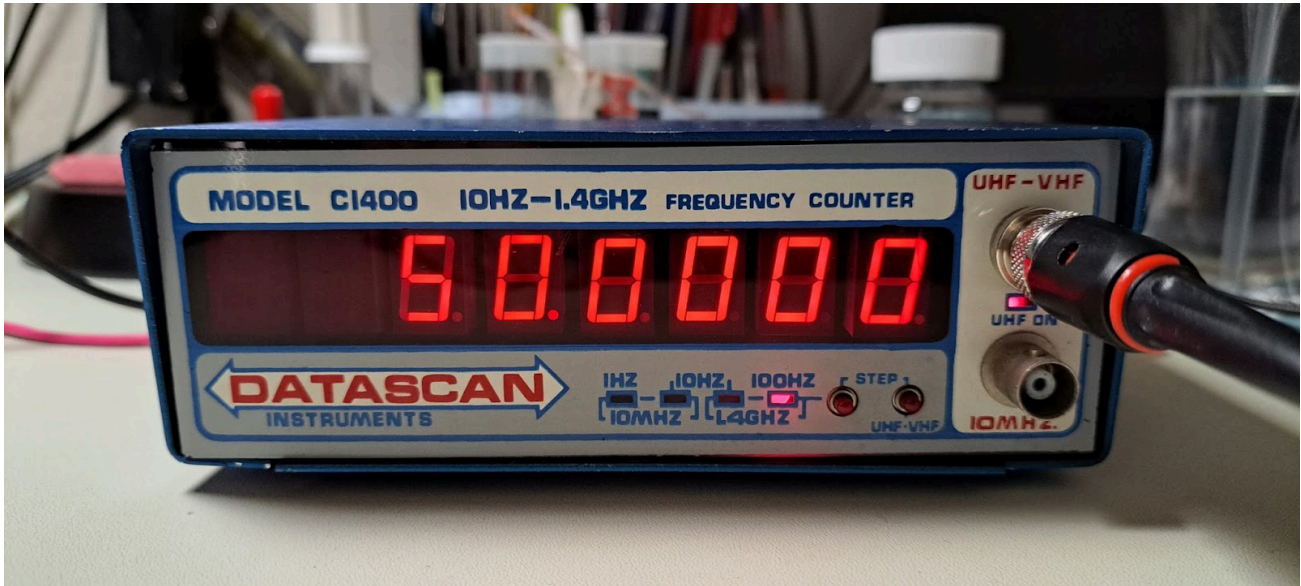


Frequency counter, Datascan C1400

Sensitivity 50 mVpp

The input BNC connectors are a little bit rusty, need cleaning up.
Internal battery is dead, was removed, and needs replacement.

To power up the device, on the back side present a connector for external power supply.
I made calibration, but the frequency counter is equipped with simple crystal quartz, so accuracy and stability is not so good.
Free, self pickup.



October 2024

Universal, programmable, multi chemistry battery charger:

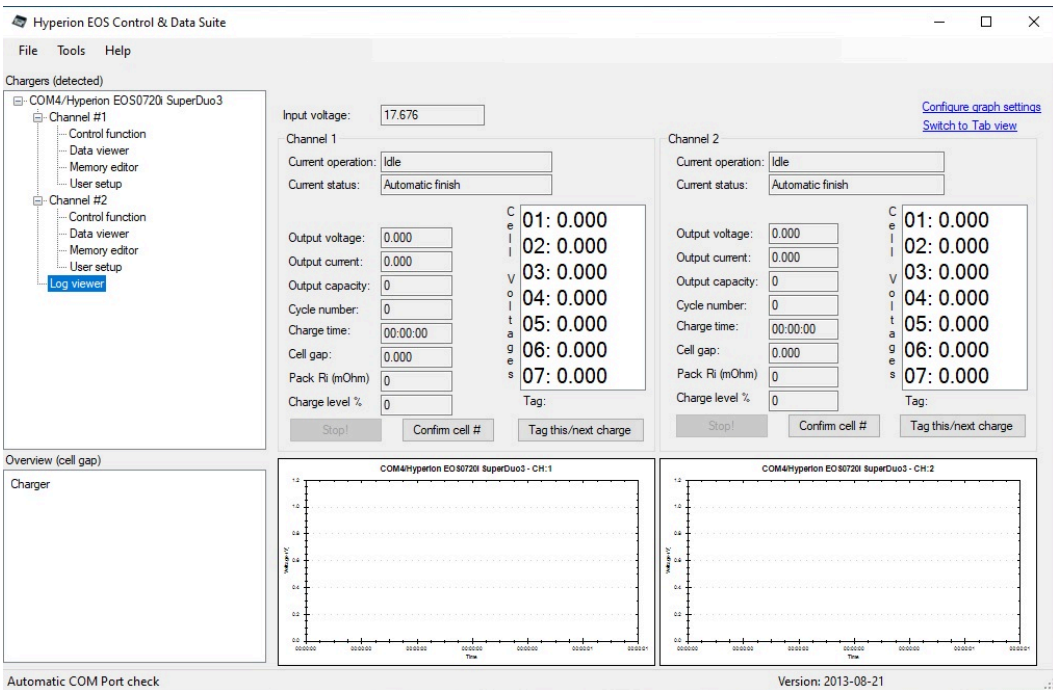
Hyperion EOS 720i Super DUO 3

+ Various cables set.

+ PC control and monitor software.

Power supply: eFuel 30A 540W

\$150



October 2024

Simi Settlers' Amateur Radio Club Web Page: <http://www.simisetters.org/index.htm>
 Simi Settlers' ARC Yahoo Group: <http://groups.yahoo.com/group/SimiSettlersARC>
 Mail: P.O. Box 2125 Simi Valley, CA 93062-2125

Simi Settlers' Leadership				
President	Brian Hernandez	KM6MIN	(805) 813-7595 cell	km6min_bh@yahoo.com
Vice President	Matt Kaufman	N3AR		matt.d.kaufman@gmail.com
Secretary	Ron Nelson	K6RIN		rnelson759@sbcglobal.net
Treasurer	Matt Griffin	KN6SEC		mgriffi79@yahoo.com
Committee Chairpersons				
Webmaster	Matt Griffin	KN6SEC	(661) 361-5955 cell	mgriffi79@yahoo.com
Newsletter	Eric Oberg	KE6MLF	(805) 791-0745 cell	ericoberg1@gmail.com
Membership	Jim Parker	KJ6LXJ	(805) 368-6745 cell	kj6lxj@gmail.com
PIO	VACANT			
Raffle Prizes	Matt Griffin	KN6SEC	(805) 433-4513 cell	mgriffi79@yahoo.com
Youth Coordinator	VACANT			
Historian	Mike Tweedy	KV6I	(805) 231-9683 cell	mtweedy@roadrunner.com
Net Coordinator	Brian Hernandez	KM6MIN	(805) 813-7595 cell	km6min_bh@yahoo.com
Food Services	Bill Everett	KI6KSV		ki6ksv@gmail.com
Room Coordinator	Linda Parker		(805) 558-1731 cell	kj6lxj@gmail.com
Elmers and Members at Large				
Past-President	Bill Woods	AB6BW	(818) 694-9019 cell	AB6BW1@gmail.com
Advisor	Bill Everett	KI6KSV		ki6ksv@gmail.com
Advisor Morse Code	John Percival	WI6O		johnspercival1@gmail.com
Advisor Mesh	Orv Beach	W6BI		orv.beach@gmail.com

October 2024

Simi Settlers Amateur Radio Club

P.O. Box 2125 Simi Valley, Ca 93062-2125 --- (www.simisetters.org)

Membership Application



Type of Application:

Type of Membership:

New Member

Individual (\$25/yr)

Renewal

Family (\$30/yr)

Name: _____ Day & Month of Birth: _____
(Omit year)

Call: _____ Class: _____ ARRL: Yes No

Address: _____ City: _____ State: ___ Zip: _____

Phone: (____) _____ Alt. Phone: (____) _____

E-Mail Address: _____

Additional Family Members:

Name: _____ Day & Month of Birth: _____
(Omit year)

Call: _____ Class: _____ ARRL: Yes No

Name: _____ Day & Month of Birth: _____
(Omit year)

Call: _____ Class: _____ ARRL: Yes No

Name: _____ Day & Month of Birth: _____
(Omit year)

Call: _____ Class: _____ ARRL: Yes No

Badges requested: Yes No How many? _____ X \$18.00 = \$ _____

Name (s) Call(s): _____

Shirt Printing: Yes No How many? _____ X \$25.00 = \$ _____

Name (s) Call(s): _____ (Self Supplied Polo Shirt, no emblem or pocket)

Hats Requested: Yes No How many? _____ X \$20.00 = \$ _____

Name (s) Call(s): _____

OFFICE USE ONLY

Application type: New Renewal Membership type: Individual Family

Date Received: _____ Amount Received: _____ Database completed: _____

Badges and Shirts ordered: _____

October 2024